

# S100 Point of Use Filter - Instructions for Use

## INTRODUCTION

Information on this sheet must be read before the use of this device to ensure safe and effective operation. Information applies to both spout and spray models.

**Sterility:** The device is sterilized by ethylene oxide.

**Recommended Storage:** Between 5 and 35°C (41 and 95°F).

## INDICATIONS

**Description:** The S100 Point of Use Filter is a disposable point of use micro-filter used to filter EPA quality drinking water. The filter retains bacteria. By retaining bacteria in water for washing and drinking, the filter may aid in infection control. The filter produces water that is suitable for cleaning of equipment used in medical procedures and washing of surgeon's hands.

**Use:** The device is intended for long term continuous use. Once it completes its useful life, the filter should be discarded and replaced. Do not attempt to sterilize or re-use it.

## CONTRAINDICATIONS

**Medical:** The filter is not intended to provide water that can be used as a substitute for USP sterile water.

**Chemical:** The S100 retains bacteria. To obtain chemically pure water it is necessary to use the filter in conjunction with other devices such as DI beds or RO systems.

## WARNINGS & PRECAUTIONS

**Pressure:** The S100 is intended for a maximum incoming water pressure of 75 psi (5 bar).

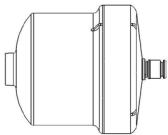
**Cyclic Use:** The S100 is rated for a maximum of 5,000 on/off cycles.

**Installed Height:** Once installed the bottom of the filter must be at least 1 inch above the top rim of the sink. A filter must not be installed if its discharge is below this height.

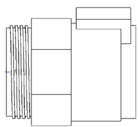
**Replacement:** The filter should be replaced when the flow rate begins to noticeably decrease. It is recommended to establish a maintenance schedule of replacing the filter dependent on water quality.

**Water Monitoring:** After installation of the S100, periodic monitoring of the water for bacteria is recommended.

## PARTS LIST



S100 Filter



Aerator Adapter

## INSTALLATION & REMOVAL

- For first time installation, it is necessary to remove the aerator from the faucet outlet and replace it with the aerator adapter.
- If necessary, use one of the rings supplied with the aerator adapter to convert it to the correct aerator thread.
- The following steps are recommended prior to attaching the filter.
  - Measure the incoming water pressure by attaching a pressure gauge to the adapter and opening the faucet valves.
  - Measure the pressure at a time of low facility water usage, hence the highest pressure (e.g. in the evening).
- Remove the filter from its package and insert the male quick connector into the aerator adapter.
- Make sure to push the filter in fully until the latch clicks and locks the filter in place.

- The installation should resemble the photo below.
- To remove a used filter, simply press the thumb latch on the aerator adapter and gently pull down on the filter to remove it.
- Discard the filter appropriately and replace it with a new one as previously described.

**Note:** Exposure of the filter to alkyl dimethyl benzyl ammonium chloride (ADBAC) may result in cracks to the external housing. It is recommended not to use ADBAC based cleaners. All S100 filters contain a bacteriostatic additive incorporated into the housing material in order to guard against surface touch contamination.

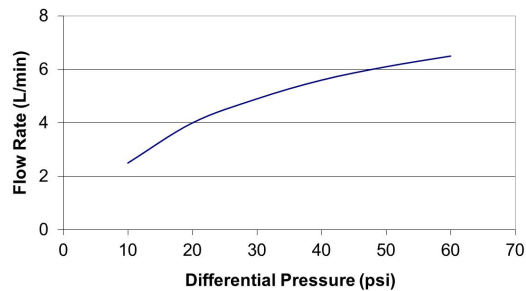
In cases where the external housing of the filters might be subject to heavy surface contamination (e.g. rinsing of used surgical instruments), it is recommended to wipe down the exterior surface of the filters with 1% bleach. Do not remove the filters or immerse them in cleaning solution.



## OPERATION

After a new S100 is installed, water should be run through the filter for approximately 20 seconds to purge it of trapped air. The pressure drop across the S100 generally reduces the flow rate by about ¼ of the rate without a filter. The filter should operate for up to 3 months of normal use with minimal degradation in flow. If the flow rate degrades significantly, the filter should be replaced.

S100 - Clean Water Flow



Specifications	S100 POU Filter
Sterilization Method	Ethylene Oxide
Max Inlet Pressure	75 psi (5 bar)
Filter Membrane Material	Versatile™ Polysulfone
Pore Size	0.1 µm
Bacterial Retention	> 10 <sup>9</sup> (B. diminuta)
Expected Life	Up to 3 months

Versatile™ is a registered trademark of Medica S.p.A.

## Manufacturer:

Nephros Inc.  
380 Lackawanna Place  
South Orange, NJ 07079 USA  
(201) 343-5202