

Installation Guide Part #: 70-0243D / 70-0242 / 70-0251 (See SSU-D and SSUmini Instructions for Use)

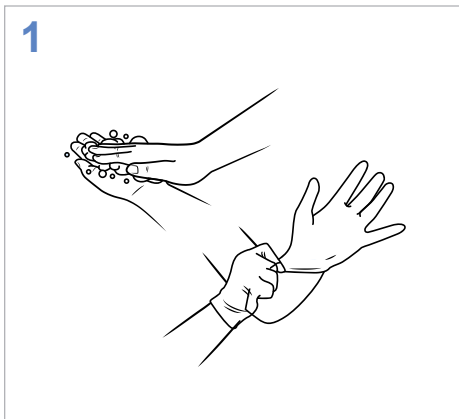
SSU-D / SSUmini

If external cleaning of the filter is needed, use 1% bleach. AVOID contact between the filter and the chemical alkyl dimethyl benzyl ammonium chloride (ADBAC).⁽¹⁾

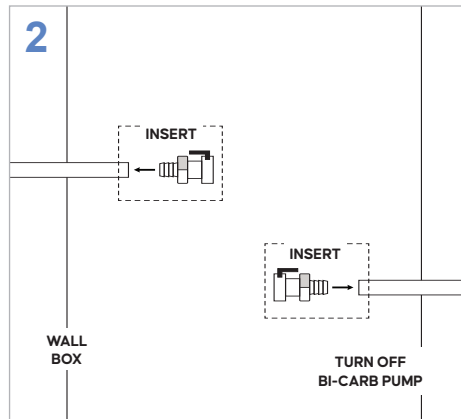
Questions or issues?
Let us help!

Call:
(201) 343-5202, Ext. 1

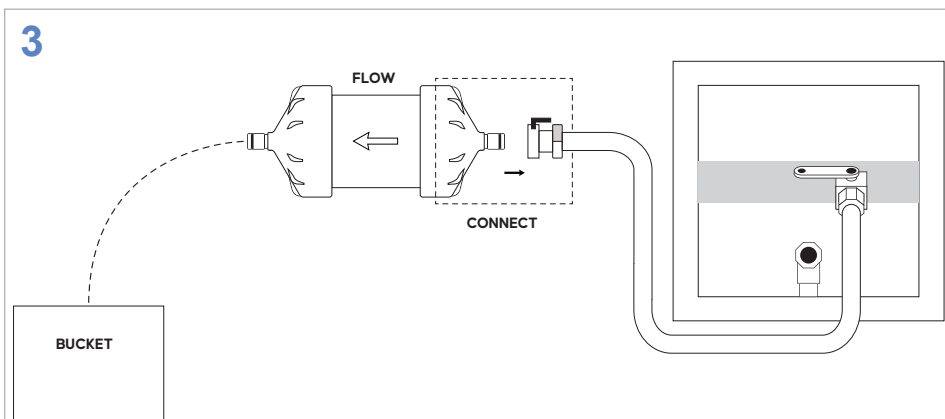
For SSU-D



1
WASH hands before starting installation.
WEAR gloves before handling filter.
Hand sanitizers used in healthcare can affect performance of product material.⁽¹⁾



2
TURN OFF the central bi-carb pump.
Behind the wall box cut the bicarb tube between the loop outlet port and the wall box bi-carb receptacle inlet.
INSERT a quick connector into both ends of the open tubes.



It is necessary to first PRIME the filter using an RO water source.

If a quick connector is not in place on the RO line (e.g. for a DSU-D filter) an adapter line will need to be used.

TURN OFF the RO water at the wall box and disconnect the line leading to the dialysis machine.

CONNECT a line to the wall box outlet using the appropriate connector (quick connect, garden hose fitting, etc.). The other end of the line will terminate in the APC quick connector.

PLACE a bucket under the filter's outlet as water will be exiting the filter.

CONNECT the SSU-D to the quick connector.

TURN ON the RO water and allow filter to PRIME for at least 2 minutes.

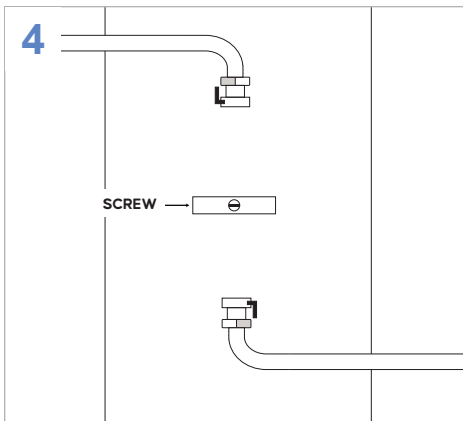
Installation Guide Part #: 70-0243D / 70-0242 / 70-0251 (See SSU-D and SSUmini Instructions for Use)

If external cleaning of the filter is needed, use 1% bleach. AVOID contact between the filter and the chemical alkyl dimethyl benzyl ammonium chloride (ADBAC).⁽¹⁾

Questions or issues?
Let us help!

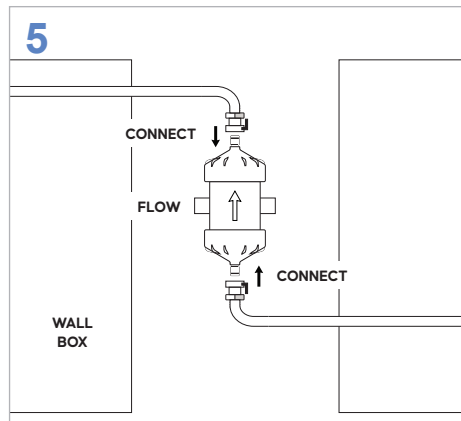
Call:
(201) 343-5202, Ext. 1

For SSU-D (continued)



SELECT a location against the wall near the wall box in the position the filter will be mounted.

DRILL a hole for the one screw of the c-clip and MOUNT the clip with its enclosed screw.



PRESS the filter into the c-clip so the direction of flow is towards wall box.

CONNECT the quick connector from the bi-carb pump line to the inlet of the filter.

CONNECT the quick connector from the wall box bicarb receptacle to the outlet of the SSU-D.

PRIME the bi-carb line by connecting a fitting to the bi-carb receptacle on the wall box. PRIME the line till bi-carb is seen leaving the tube.

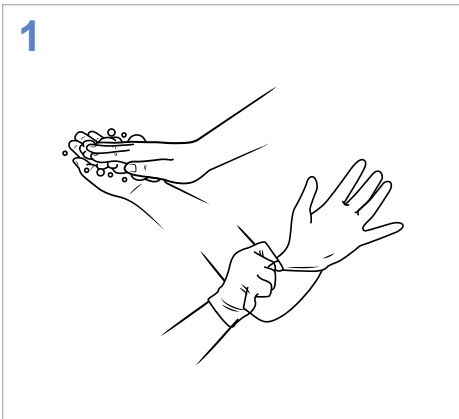
Installation Guide Part #: 70-0243D / 70-0242 / 70-0251 (See SSU-D and SSUmini Instructions for Use)

If external cleaning of the filter is needed, use 1% bleach. AVOID contact between the filter and the chemical alkyl dimethyl benzyl ammonium chloride (ADBAC).⁽¹⁾

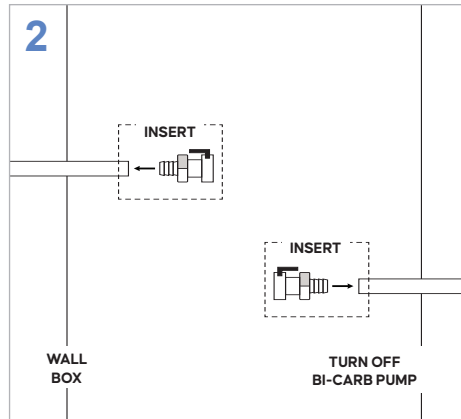
Questions or issues?
Let us help!

Call:
(201) 343-5202, Ext. 1

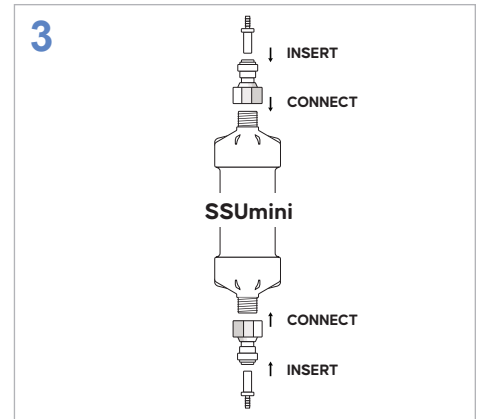
For SSUmini



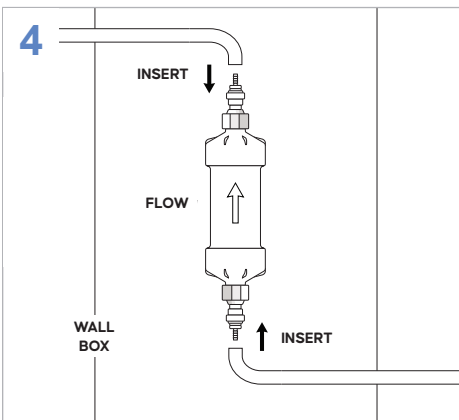
1
WASH hands before starting installation.
WEAR gloves before handling filter.
Hand sanitizers used in healthcare can affect performance of product material.⁽¹⁾



2
TURN OFF the central bi-carb pump.
Behind the wall box cut the bicarb tube between the loop outlet port and the wall box bi-carb receptacle inlet.



3
If necessary, CONNECT the John-Guest to threaded connectors onto the inlet and outlet side of the SSUmini.
INSERT the tube fitting into the opening of the John-Guest adapter. Be sure to insert the tube fitting so that it is secure into the connector and check by tugging at the tube fitting.



4
The FLOW of the filter should be in the direction towards the wall box.
INSERT the barb fitting from the inlet of the filter into the bi-carb pump line.
INSERT the barb fitting of the outlet of the SSUmini into the tube from the wall box bi-carb receptacle.
PRIME the bi-carb line by connecting a fitting to the bi-carb receptacle on the wall box. PRIME the line till bi-carb is seen leaving the tube.

(1) The chemical ADBAC can cause structural damage to filter.