

**Installation Guide** Part #: 70-0282 (See S100 Instructions for Use)

## S100 Point of Use Shower

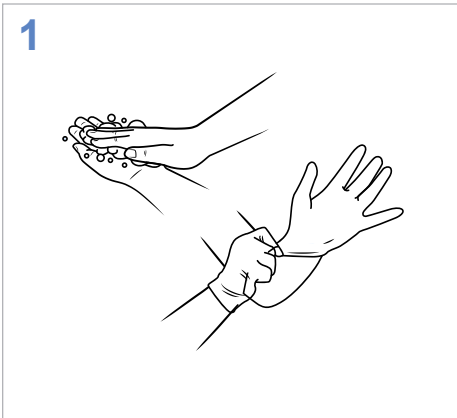
**AVOID contact between the filter and the chemical alkyl dimethyl benzyl ammonium chloride (ADBAC).<sup>(1)</sup>**

If external cleaning of the S100 is needed, use a 1% bleach cleaner such as Clorox® Healthcare Bleach Germicidal, or Dispatch® Hospital Cleaner Disinfectant Towels with Bleach.

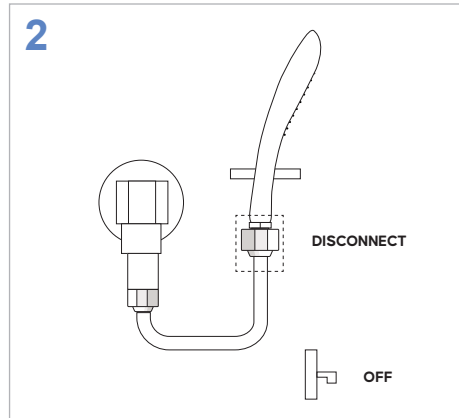
All S100 filters contain a bacteriostatic additive incorporated into the housing material in order to guard against surface touch contamination. In cases where the external housing of the filters might be subject to heavy surface contamination (e.g., rinsing of used surgical instruments), it is recommended to wipe down the exterior surface of the filters with 1% bleach. Do not remove the filters or immerse them in cleaning solution.

Questions or issues?  
Let us help!

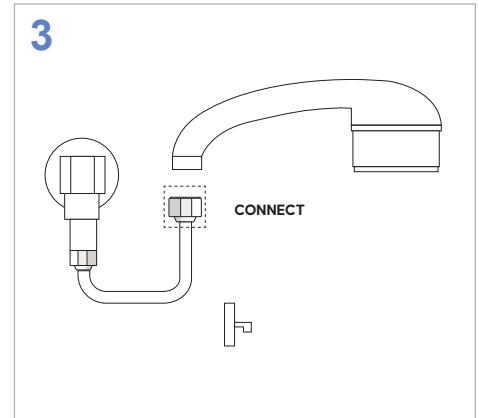
Call:  
**(201) 343-5202, Ext. 1**



WASH hands before starting installation.  
WEAR gloves before handling filter.  
Hand sanitizers used in healthcare can affect performance of product material.<sup>(1)</sup>



TURN OFF the water valve to the shower.  
DISCONNECT and REMOVE the old shower handle from the shower hose.  
To dispose of old shower handle, do so according to facility policy.



CONNECT the S100 shower handle to the shower hose.  
OPEN the water valve and check for any leaking between the S100 shower handle and the shower hose. Tighten the connection if needed.

(1) The chemical ADBAC can cause structural damage to filter.