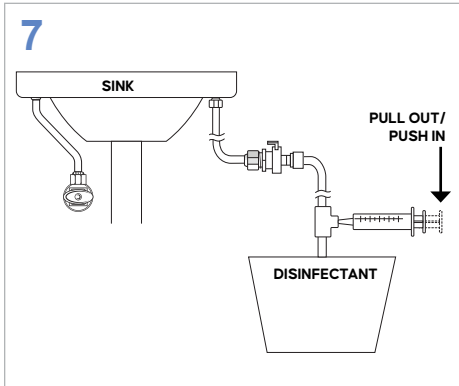


Installation Guide Part #: 70-0285, 70-0286 (See DSU-H Instructions for Use)

DSU-H Installation at Sinks (continued)

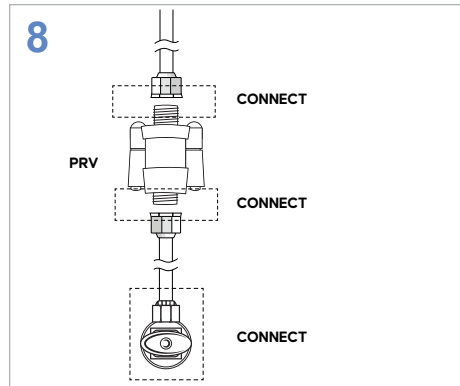


PULL out syringe plunger to draw the disinfectant.

DELIVER the disinfectant by pushing in the syringe until disinfectant is seen coming out of the spout.

ALLOW disinfectant to dwell in faucet hardware for 5 minutes.

DISCONNECT the faucet disinfection unit from the flex line and if gauze has fallen out of spout, place back in spout so that it is there when performing disinfection for the other side of sink.

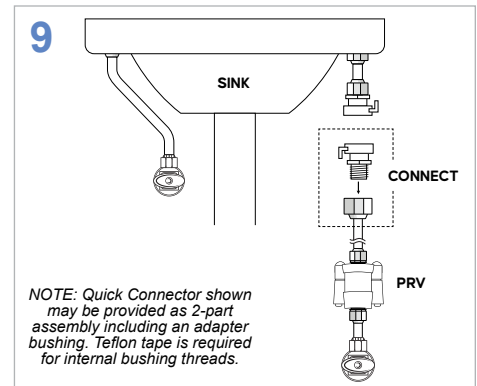


CONNECT the water valve flex line to the water valve 3/8" compression fitting.

CONNECT the water valve flex line's 1/2" NPSF fitting to the inlet side of the PRV (identify that arrows on PRV follow flow direction).

CONNECT a new flex line to the outlet side of the PRV

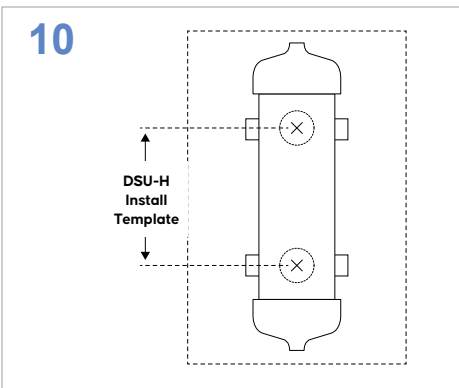
NOTE: Hand-tighten only. DO NOT USE Teflon tape.



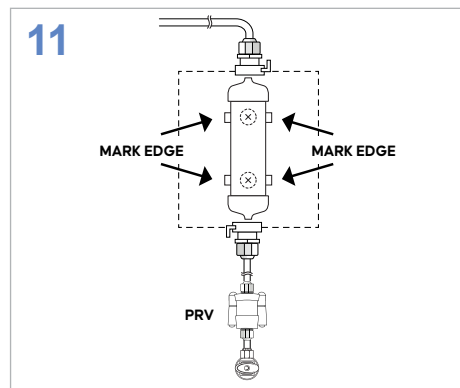
NOTE: Quick Connector shown may be provided as 2-part assembly including an adapter bushing. Teflon tape is required for internal bushing threads.

For 70-0285 (QC): CONNECT a QC to the other end of the water valve flex line.

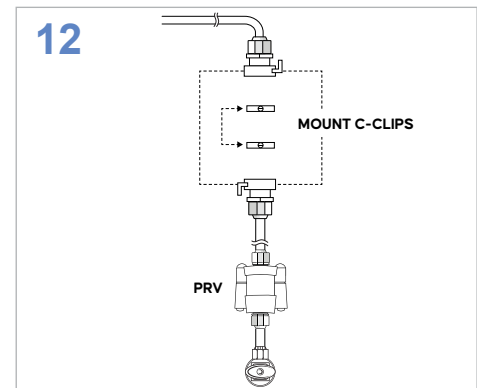
TURN ON the water source to ensure there are no leaks, then turn water source back off.



ATTACH the DSU-H template (provided in installation kit) against the wall in a desired position (vertical is preferred) to ensure that both flex lines are not stretched.



MARK the hole locations of the C-Clips on the wall.



MOUNT the C-Clips with 2 screws (1 each).

DO NOT REMOVE the blister pack.

PUT ON new gloves.

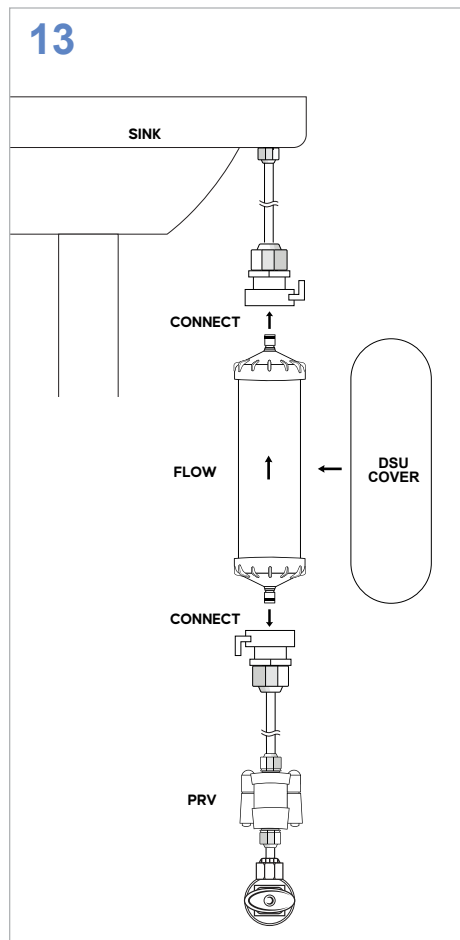
Installation Guide Part #: 70-0285, 70-0286 (See DSU-H Instructions for Use)

DSU-H Installation at Sinks (continued)



HOLD the filter by the transparent portion of the blister pack and tear away the white backing as shown in Diagram 1.

Caution: Do not touch filter outlet to avoid contamination.



REMOVE blister pack and CLIP filter to the C-Clips so the flow symbol on filter is towards the faucet.

CONNECT the water valve flex line to the inlet of filter.

CONNECT the faucet stem flex line to the outlet of filter.

OPEN water supply valves and faucet valves to allow filter to prime until desired flow rate is reached and water is clear of air bubbles and disinfectant is flushed out of the system (3–5 minutes depending on water pressure).

USE residual test strips on running water to ensure residual disinfectant levels do not exceed 4ppm.

CLOSE the faucet valves and CHECK for any leaks.

TIGHTEN any fittings if necessary.

If included, PRESS ON the DSU-H Cover onto the filter. *(It is recommended to install the DSU-H Cover to shield the filter from the external environment.)*

NOTES:

For installation on faucets with a touchless sensor mechanism, the faucet can be bypassed to speed up the priming process.

For additional or replacement disinfection units, use Disinfection Kit, 70-0293.

If your static pressure is below 30psi, additional time may be needed to flush the filter and purge trapped air.

Please contact Nephros for additional assistance with these processes.

(1) Medical-grade plastics are more susceptible to cracking due to exposure to organic solvents. Alkyl dimethyl benzyl ammonium chloride (ADBAC), glycols, alcohols, ketones, silicones, and acetones are some examples of the leading organic solvents found in cleaning and sanitizing agents. Use of cleaning/sanitizing agents on the filter housings is not required and should be avoided.

(2) Wear appropriate PPE and exercise caution when handling bleach.

NEPHROS.COM

MANUFACTURER:

Nephros, Inc.
380 Lackawanna Place, South Orange, NJ 07079 USA
(201) 343-5202

50-3204 REV13