

Installation Guide

Part #: 70-0288, 70-0289 (See S100 In-Line Instructions for Use)

S100 In-Line Sink/Eyewash Station

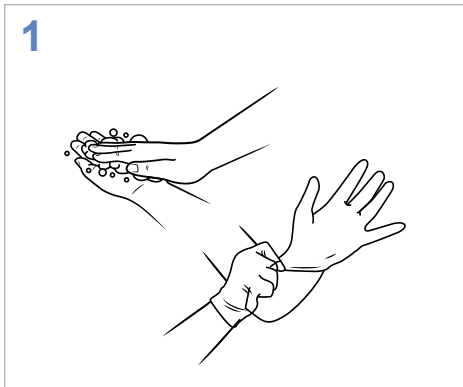
AVOID contact between the filter and the cleaning or sanitizing agents.⁽¹⁾

DO NOT remove blister pack from filter until indicated to protect from contamination.

NOTE: For pressures above 75psi, a pressure regulator should be installed to maintain pressures at or below 75psi. A hammer arrester should be installed in applications where water hammer may be present.

Questions or issues?
Let us help!

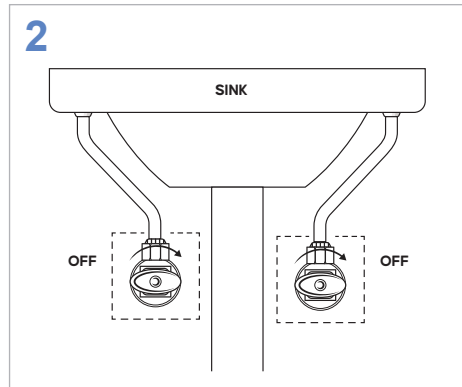
Call:
(201) 343-5202, Ext. 3



READ the entire installation guide and precautions before starting.

WASH hands before starting installation.

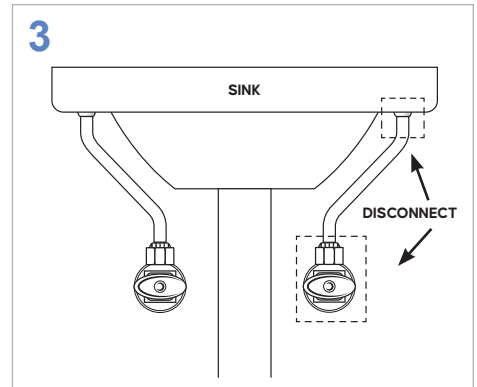
WEAR gloves before handling filter (do not remove blister pack).



Turn OFF the water supply valves and OPEN faucet.

For sinks with a S100 In-Line previously installed: REMOVE the existing filter, begin installation at Step 5-7, and conclude with Step 12.

For eyewash stations, follow the same installation instructions as the Sink.

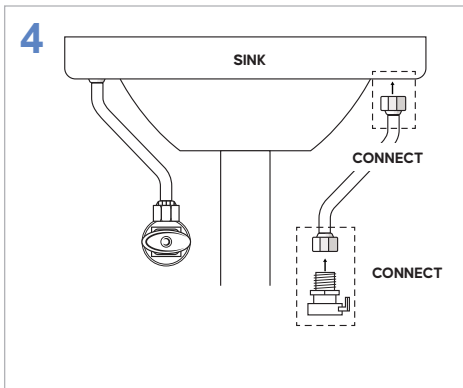


DISCONNECT, REMOVE, and DISCARD the current flex lines on both sides of sink.

Current flex line can be reused in-front of the filter if not removable.

REMOVE and DISCARD the aerator (connected to spout).

NOTE: Filter should be installed as close to sink as possible (e.g., after any check valves, mixing valves, tees, etc.) to reduce risk of contamination.

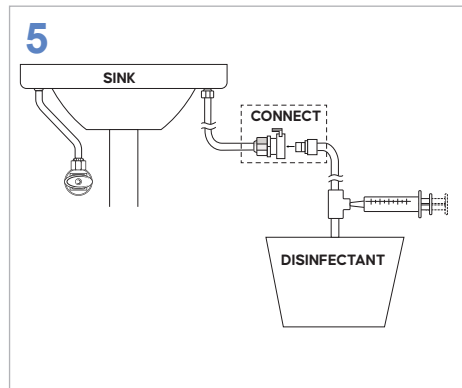


CONNECT the stem flex line to the station stem by the 1/2" NPSF fitting.

CONNECT the Quick Connector (QC) onto the other end of the stem flex line.

NOTE: For installations using existing 3/8" Compression lines, use the included 3/8" Compression x 1/2" IPS adapter for connection to the QC. Use the cone gasket provided with the adapter.

DO NOT USE Teflon tape.



Clorox® Germicidal Bleach (Concentrated) is the recommended disinfectant choice.⁽²⁾

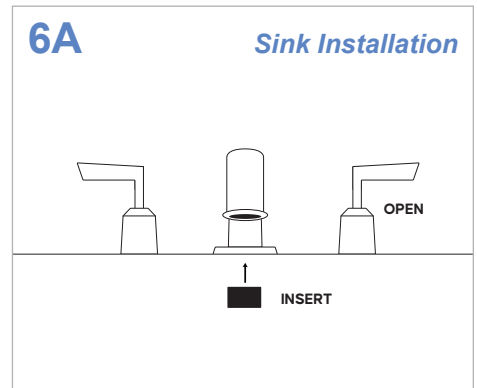
CONNECT the outlet of the disinfection kit to the flex line QC.

PLACE the inlet hose of disinfection kit into disinfectant (e.g. bleach) container.

NOTE: Final disinfectant concentration of sodium hypochlorite should be 4–8.25%.

For sink installation proceed to step 6A.

For eyewash installation proceed to step 6B.



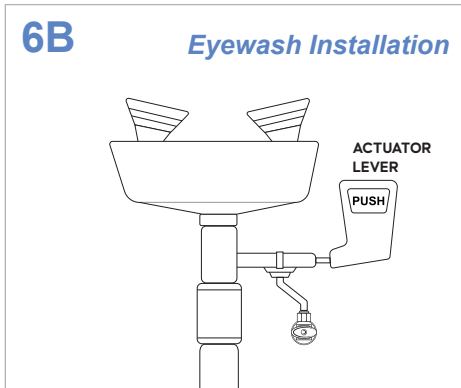
Ensure the faucet valve is open.

INSERT a piece of gauze or paper towel to allow for disinfectant to dwell in the faucet.

NEPHROS

Installation Guide Part #: 70-0288, 70-0289 (See S100 In-Line Instructions for Use)

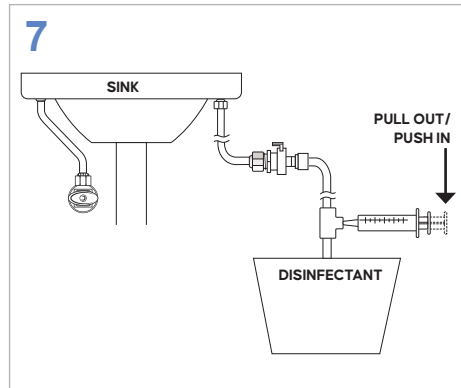
S100 In-Line Sink/Eyewash Station



Place a plastic cover or sheet over the station to redirect water down into the drain basin.

CONFIRM that station is open by ACTIVATING the On/Off valve or pushing the actuator lever.

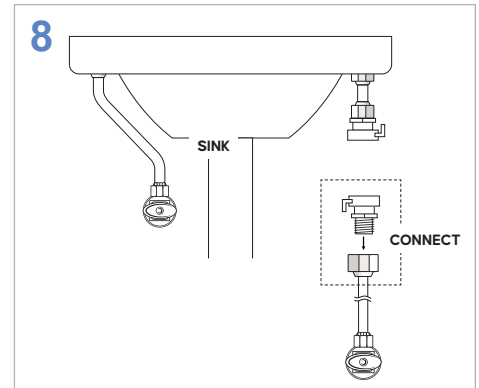
USE a piece of masking tape to hold the actuator lever open if needed.



PULL out syringe plunger to draw the disinfectant. DELIVER the disinfectant by pushing in the syringe until disinfectant is seen coming out of the spout.

ALLOW disinfectant to dwell in station hardware for 5 minutes.

DISCONNECT the faucet disinfection unit from the flex line.

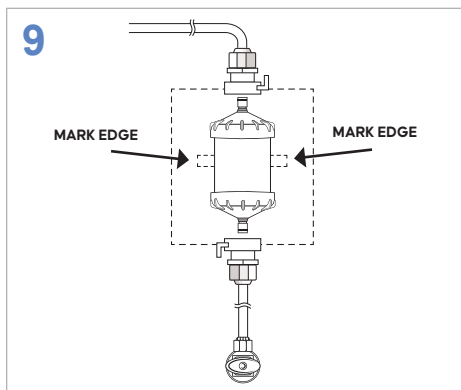


CONNECT the water valve flex line to the water valve by the 3/8" compression fitting.

For 70-0288 (QC): CONNECT a QC to the other end of the water valve flex line.

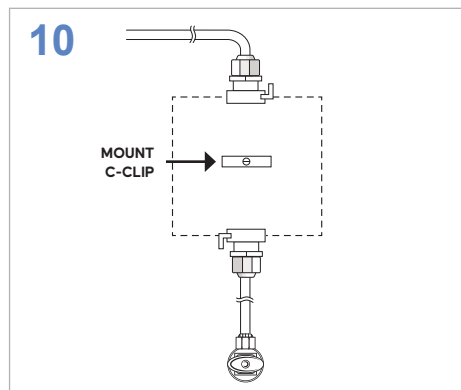
TURN ON the water source to ensure there are no leaks, then turn water source back off.

For 70-0289 (threaded): CONNECT flow restrictor to other end of the water valve flex line. Then REMOVE the QC from the other end of the stem flex line going to sink.



PLACE filter vertically against a surface near the station in a position so that both flex lines are not stretched.

MARK the edges of the filter center at its location.



MOUNT the C-Clip with a screw at the location marked.

PUT ON new gloves.

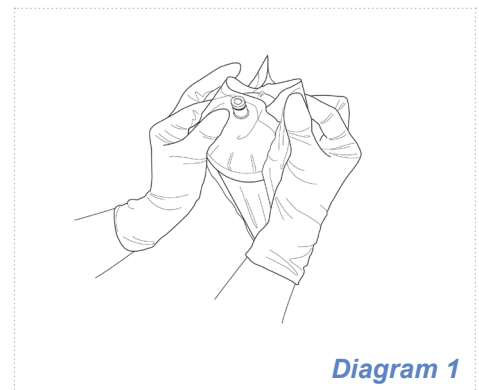


Diagram 1

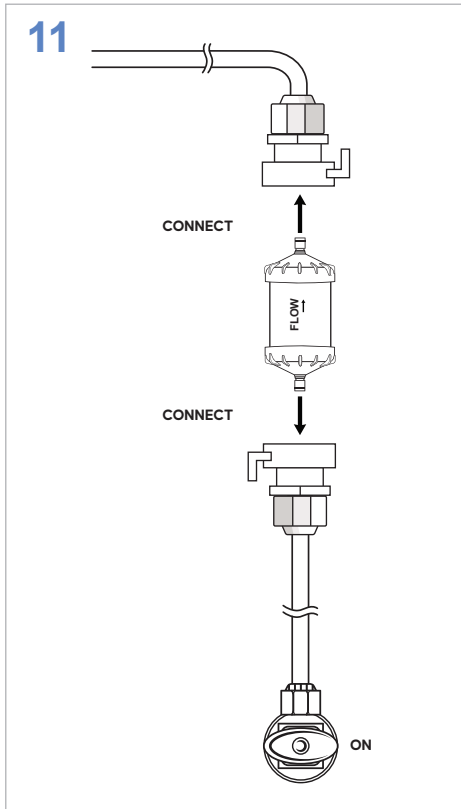
HOLD the filter by the transparent portion of the blister pack and tear away the white backing as shown in Diagram 1.

Caution: Do not touch filter outlet to avoid contamination.

Installation Guide

Part #: 70-0288, 70-0289 (See S100 In-Line Instructions for Use)

S100 In-Line Sink/Eyewash Station



REMOVE blister pack, write the installation date on the filter, and CLIP filter to the C-Clip so the flow symbol on filter is towards the station.

CONNECT the water valve flex line to the inlet of filter.

CONNECT the station stem flex line to the outlet of filter.

OPEN water supply valves and assure actuator lever is depressed to allow filter to prime until a stable flow rate is reached and water is clear of disinfectant and is flushed out of the system (3–5 minutes depending on water pressure).

USE residual test strips on running water to ensure residual disinfectant levels do not exceed 4ppm.

RELEASE the actuator lever and CHECK for any leaks.

TIGHTEN any fittings if necessary.

NOTES:

For additional or replacement disinfection units, use Disinfection Kit, 70-0293.

For additional installation guidance for other types of equipment not shown here, please contact us at (201) 343-5202, Ext.3.

(1) Medical grade plastics are more susceptible to cracking due to exposure to organic solvents. Alkyl dimethyl benzyl ammonium chloride (ADBAC), glycols, alcohols, ketones, silicones, and acetones are some examples of the leading organic solvents found in cleaning and sanitizing agents. Use of cleaning/sanitizing agents on the filter housings is not required and should be avoided.

(2) Wear appropriate PPE and exercise caution when handling bleach.

MANUFACTURER:

Nephros, Inc.
380 Lackawanna Place, South Orange, NJ 07079 USA
(201) 343-5202