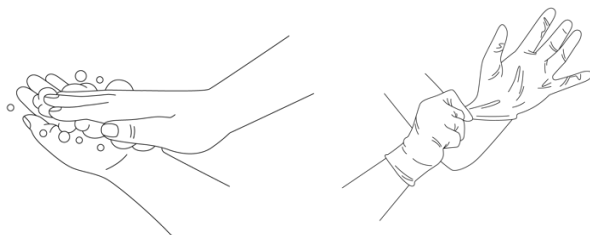


S100 Sink Fixture Filter Installation with Low-Profile Sink Adapter

1

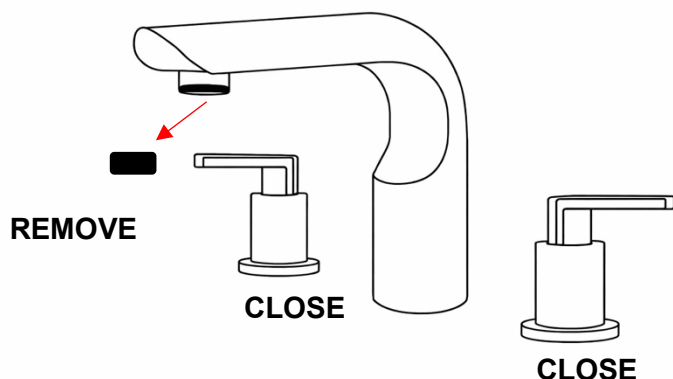


READ the entire installation guide and precautions before starting.

WASH hands.

WEAR gloves before handling filter (do not remove blister pack).

2

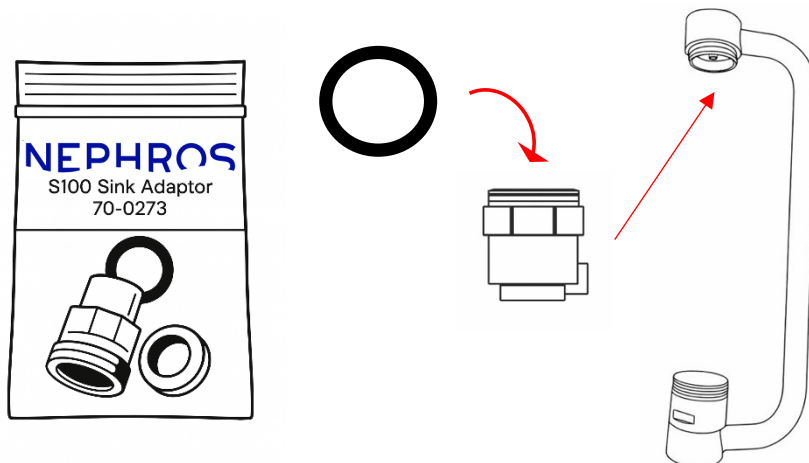


CLOSE the water valves.

For new installations, REMOVE any existing faucet heads or aerators from faucet.

For filter replacements, REMOVE filter and PROCEED from Step 10.

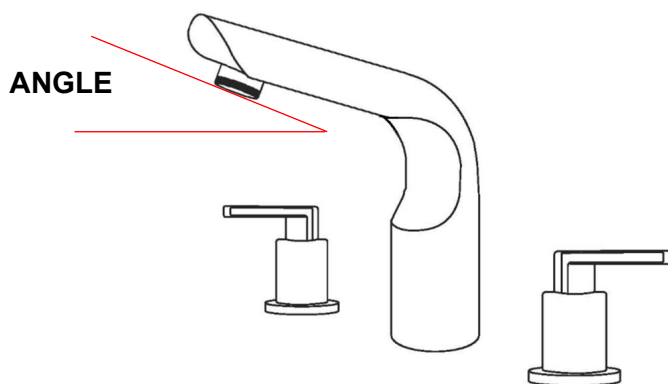
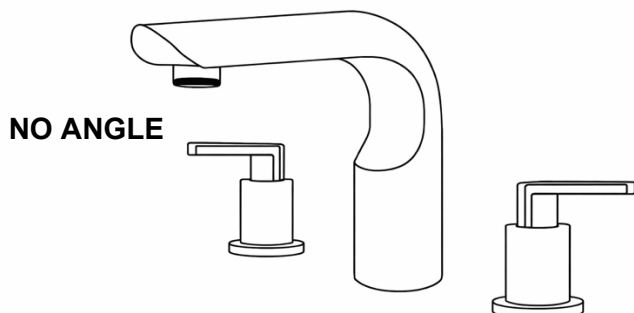
3



OPEN the 70-0351 kit and TAKE OUT the 70-0273 Sink Adapter Kit.

INSTALL the largest diameter gasket in the bag into the QC adapter as shown, then INSTALL the adapter and gasket onto the short head of adapter arm.

4

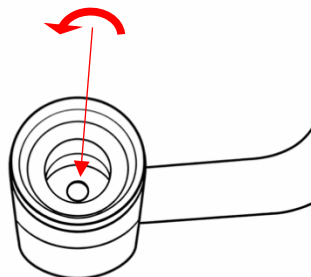
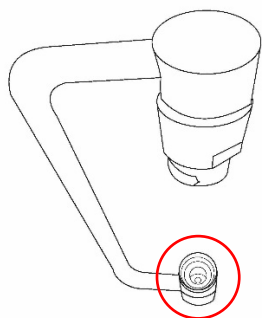


EVALUATE sink faucet to determine the angle of the outlet.

If the faucet outlet is at an angle, DETERMINE if 30° locking angle on adapter is required. Refer to faucet supplier documentation if needed.

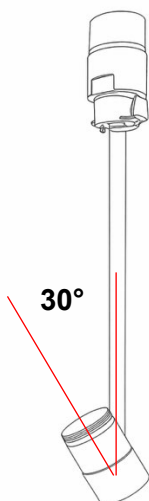
If 30° locking angle is not needed, PROCEED from Step 7.

5

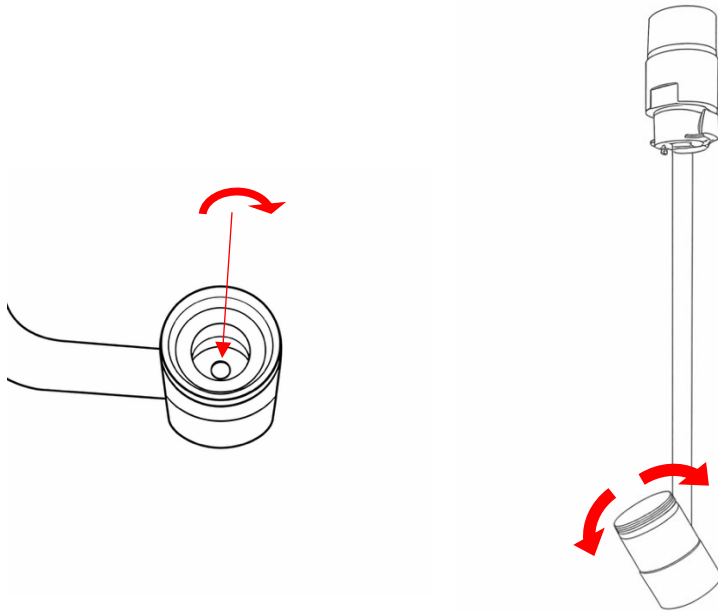


If 30° locking angle is required, LOOSEN set screw on faucet end of adapter 2 full rotations or until it no longer is engaged with locking groove.

ADJUST angle of long head to be approximately 30° from the arm in the desired direction.



6



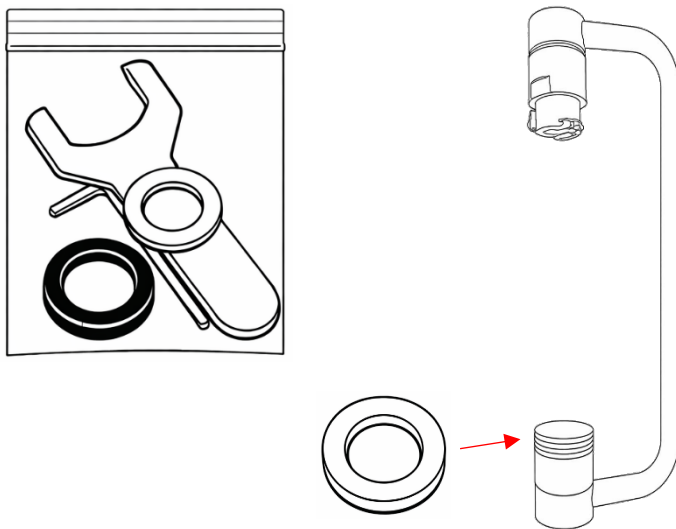
SLOWLY tighten set screw 1 full rotation at a time, and CHECK if locking groove is being engaged.

To know if groove is being engaged, GENTLY ROTATE long head back and forth lightly. If the head moves easily but in a limited range, the groove is engaged.

If groove is not yet engaged, TIGHTEN set screw a half turn and RECHECK engagement.

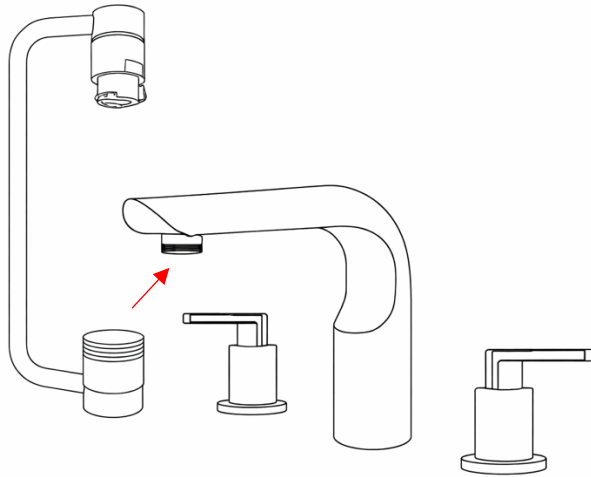
Once the groove is starting to engage, CENTER long head in groove and TIGHTEN the set screw completely.

7



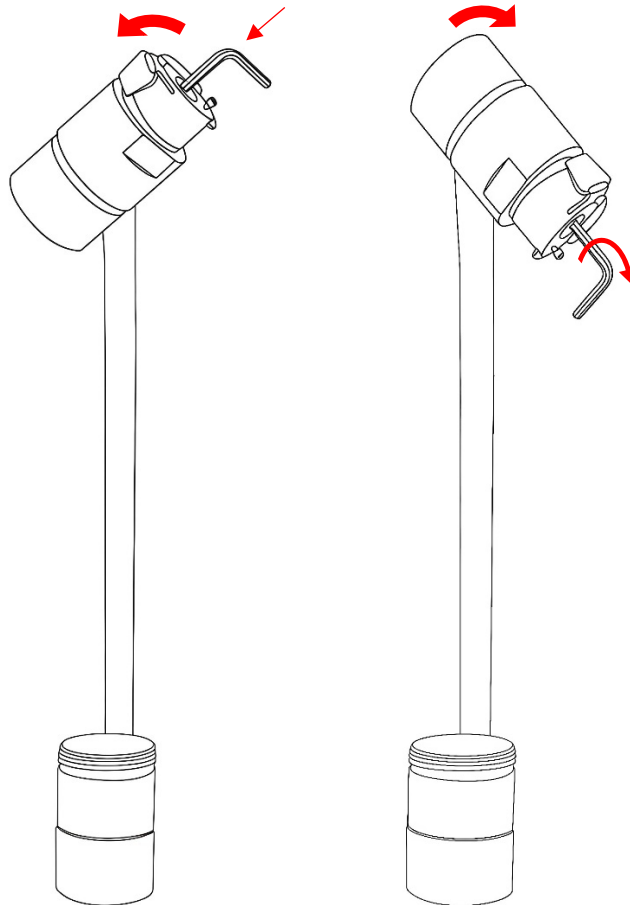
OPEN accessories bag and REMOVE clear gasket from bag. INSTALL gasket onto long head of adapter arm.

8



ALIGN long head of adapter onto exposed threads of faucet. **TIGHTEN** adapter onto faucet completely using wrench from accessories bag.

9



Once adapter is installed onto faucet, **FLIP** the short head of the adapter up and **ALIGN** hex key with set screw. **Do NOT TIGHTEN** the set screw at this time.

With the hex key aligned into the set screw, **HOLD** hex key in place and **FLIP** short head back down into the desired adapter position. **TIGHTEN** set screw and **REMOVE** hex key.

10



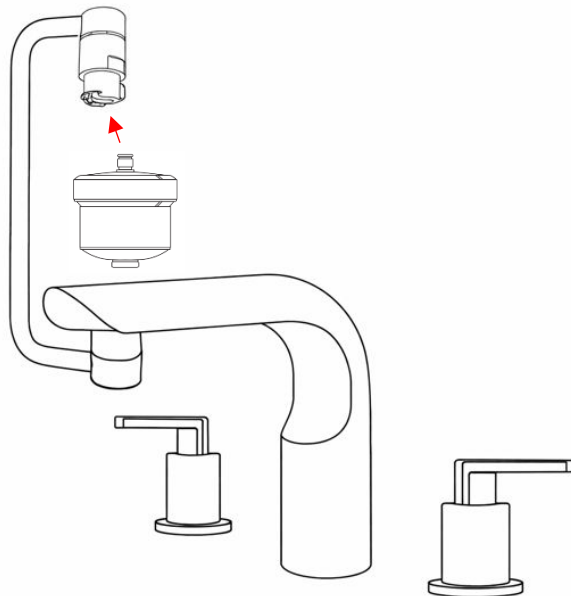
REMOVE used gloves and
PUT ON new gloves.

DO NOT REMOVE the blister
pack from the filter. TEAR
OPEN the pack ends to
expose connector as shown.

HOLD the filter by the blister
and PROCEED to next step.

**CAUTION: DO NOT TOUCH
THE FILTER OUTLET TO
MINIMIZE RISK OF
CONTAMINATION.**

11



INSTALL filter onto adapter.
HOLD adapter and PUSH
the filter in until the latch on
QC adapter clicks.

TURN ON faucet,
EVALUATE for any leaks,
and TIGHTEN connections
as needed.

AVOID contact between filter and cleaning or sanitizing agents. Medical grade plastics are more susceptible to cracking due to exposure to organic solvents. Alkyl dimethyl benzyl ammonium chloride (ADBAC), glycols, alcohols, ketones, silicones, and acetones are some examples of the leading organic solvents found in cleaning and sanitizing agents. Use of cleaning/sanitizing agents on the filter housings is not required and should be avoided.

DO NOT remove blister pack from filter until indicated to protect from contamination.

Questions or issues? Let us help!

Call: (201) 343-5202, Ext. 3
Email: sales@nephros.com

50-3250 REV00